

Appendix E-4
Finding Documentation

Part 2 of 5

APPENDIX A

Figures

Figure 1 : Project Location Map

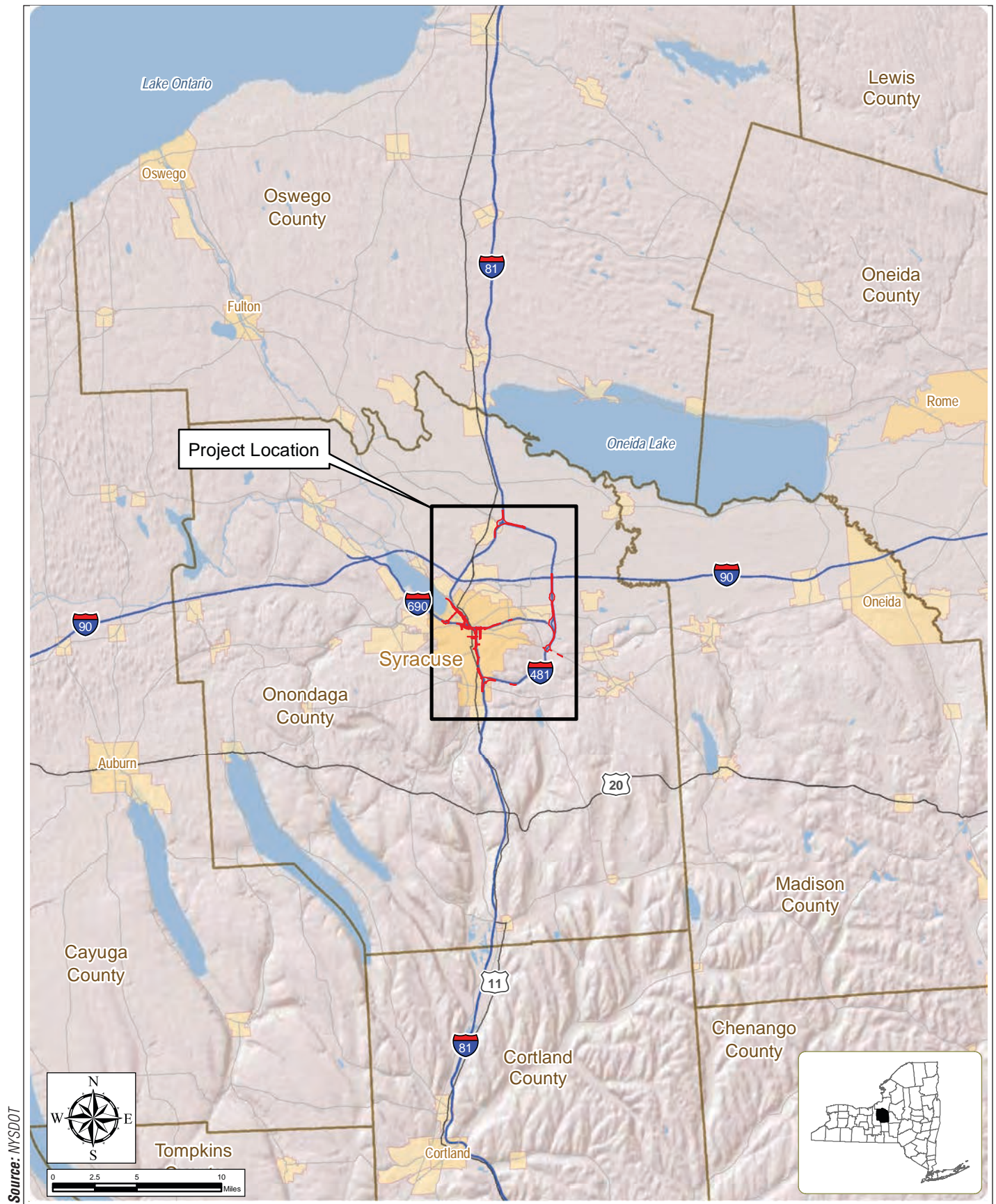
Figures 2a–2h : Historic Properties and Build Alternatives

Property Key for Historic Properties and Build Alternatives Figures

Figures 3a-3d : Viaduct Alternative Overview

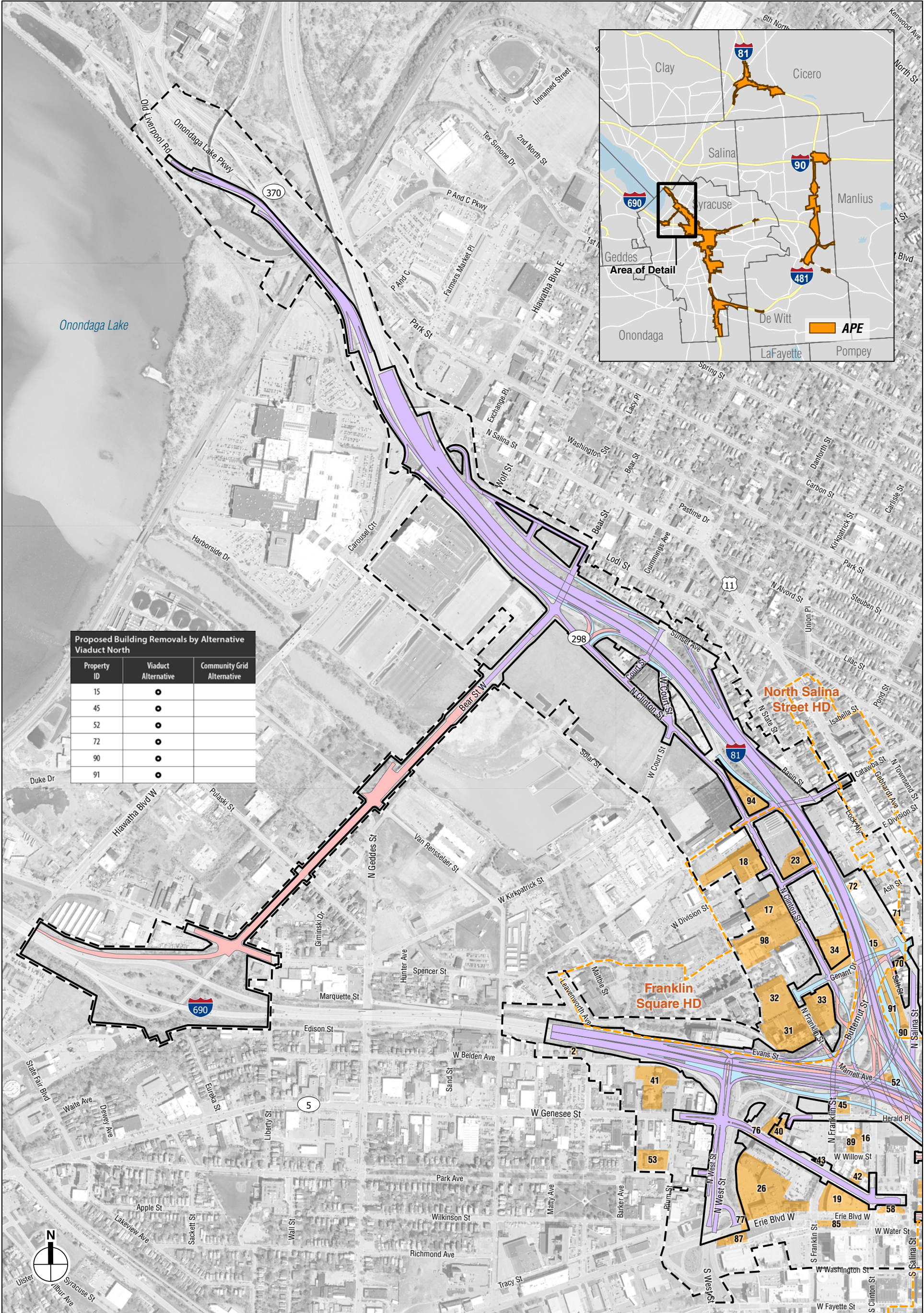
Figures 4a -4f : Community Grid Alternative Overview

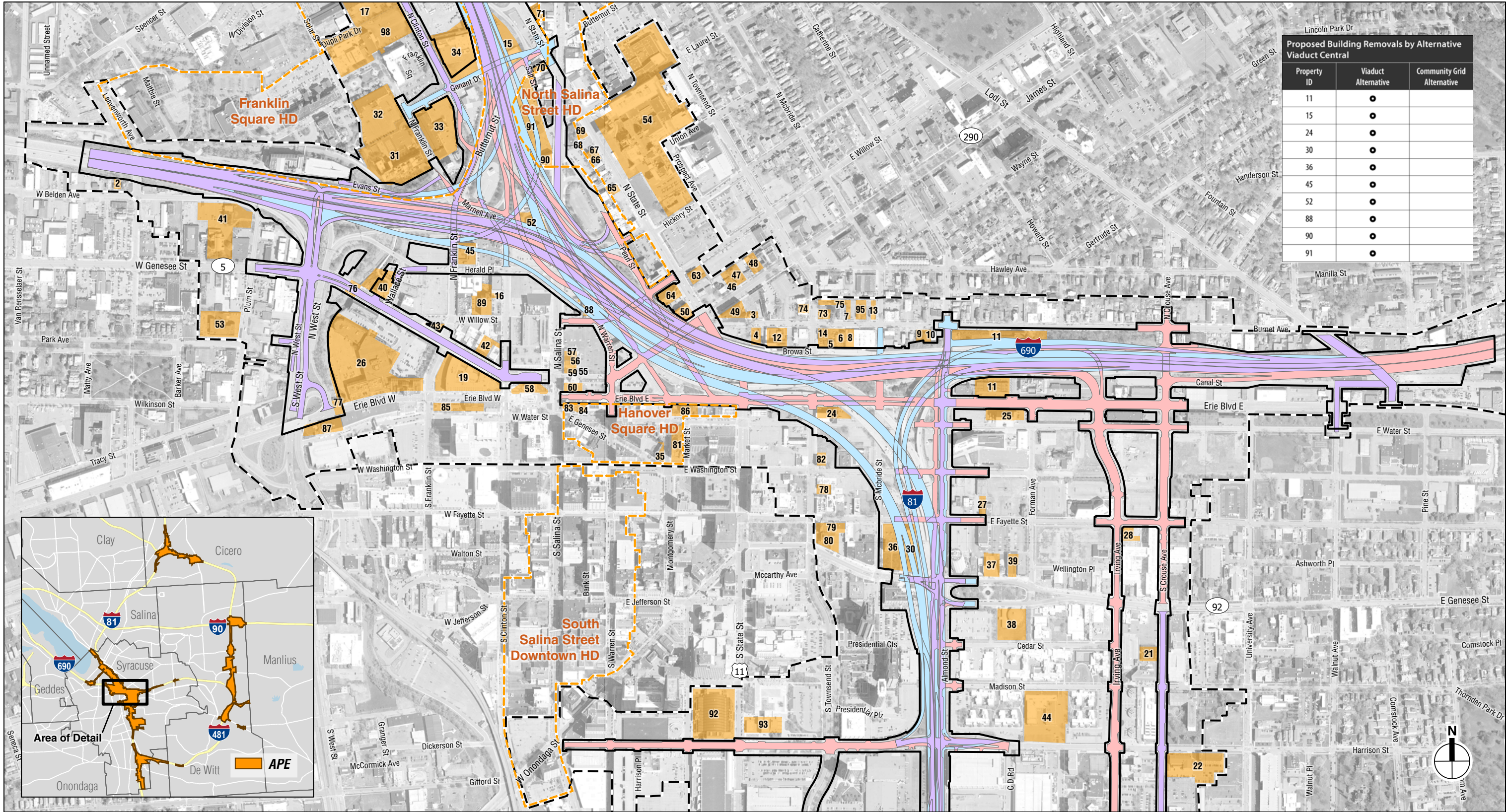
Figures 5a - 5h : Area of Potential Effects

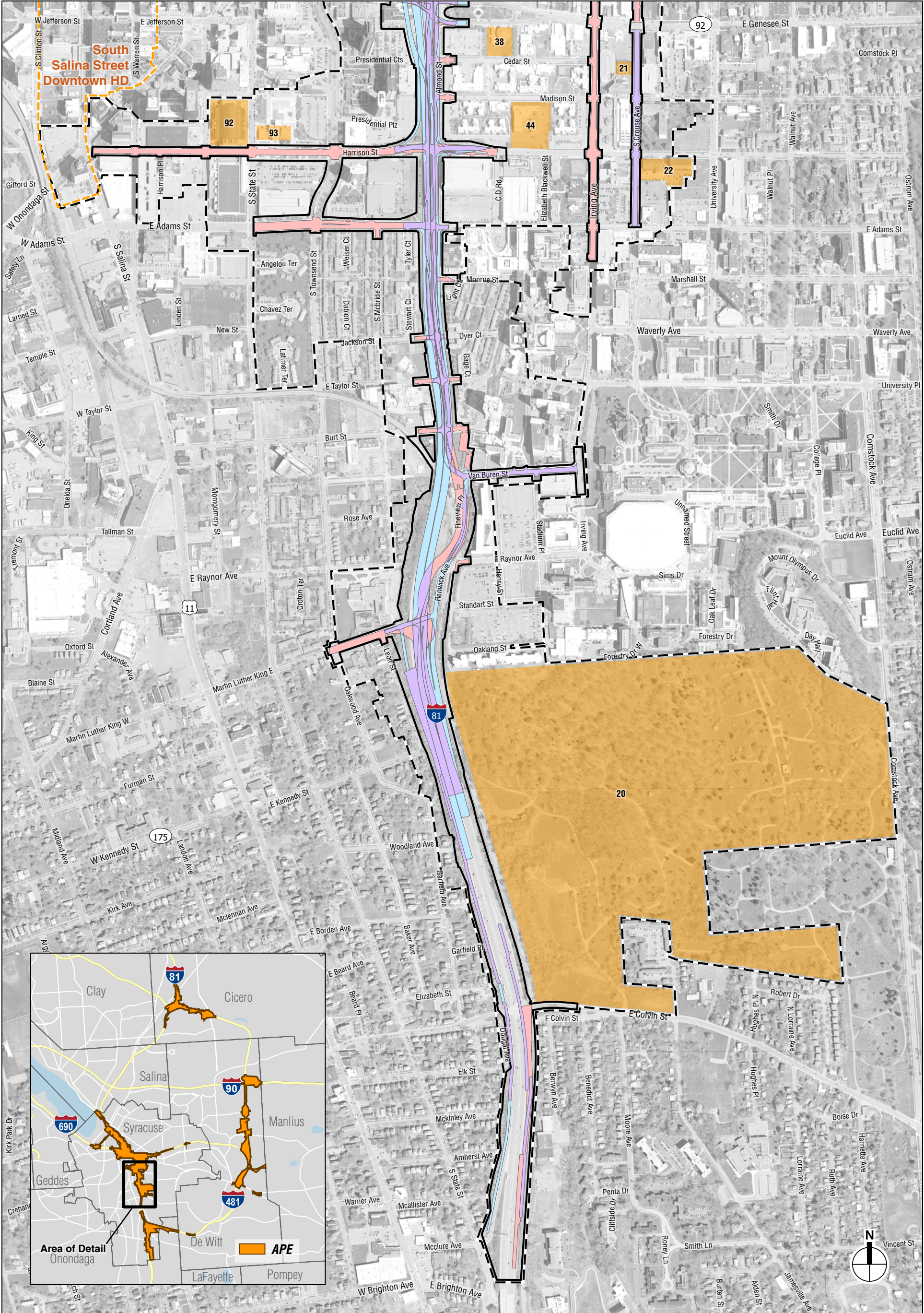


I-81 Viaduct Project

Regional Project Location
Figure 1

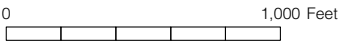




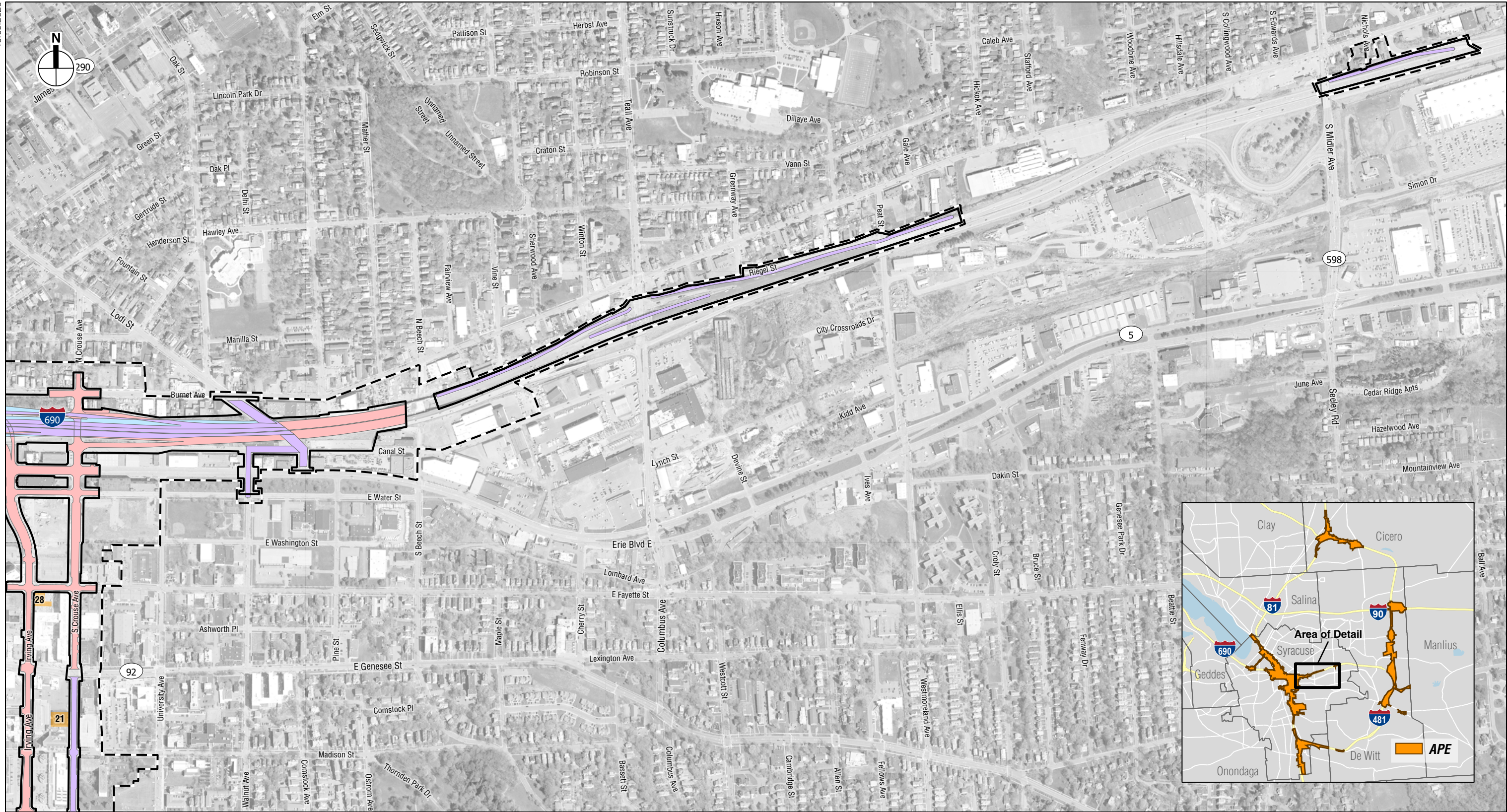


- Area of Potential Effects (APE)
- Limits of Disturbance (LOD), Combined Alternatives
- Historic District Boundaries (only those intersecting APE are shown)
- National Register Listed/Eligible

- Both (Viaduct and Community Grid) Alternatives
- Viaduct Alternative
- Community Grid Alternative

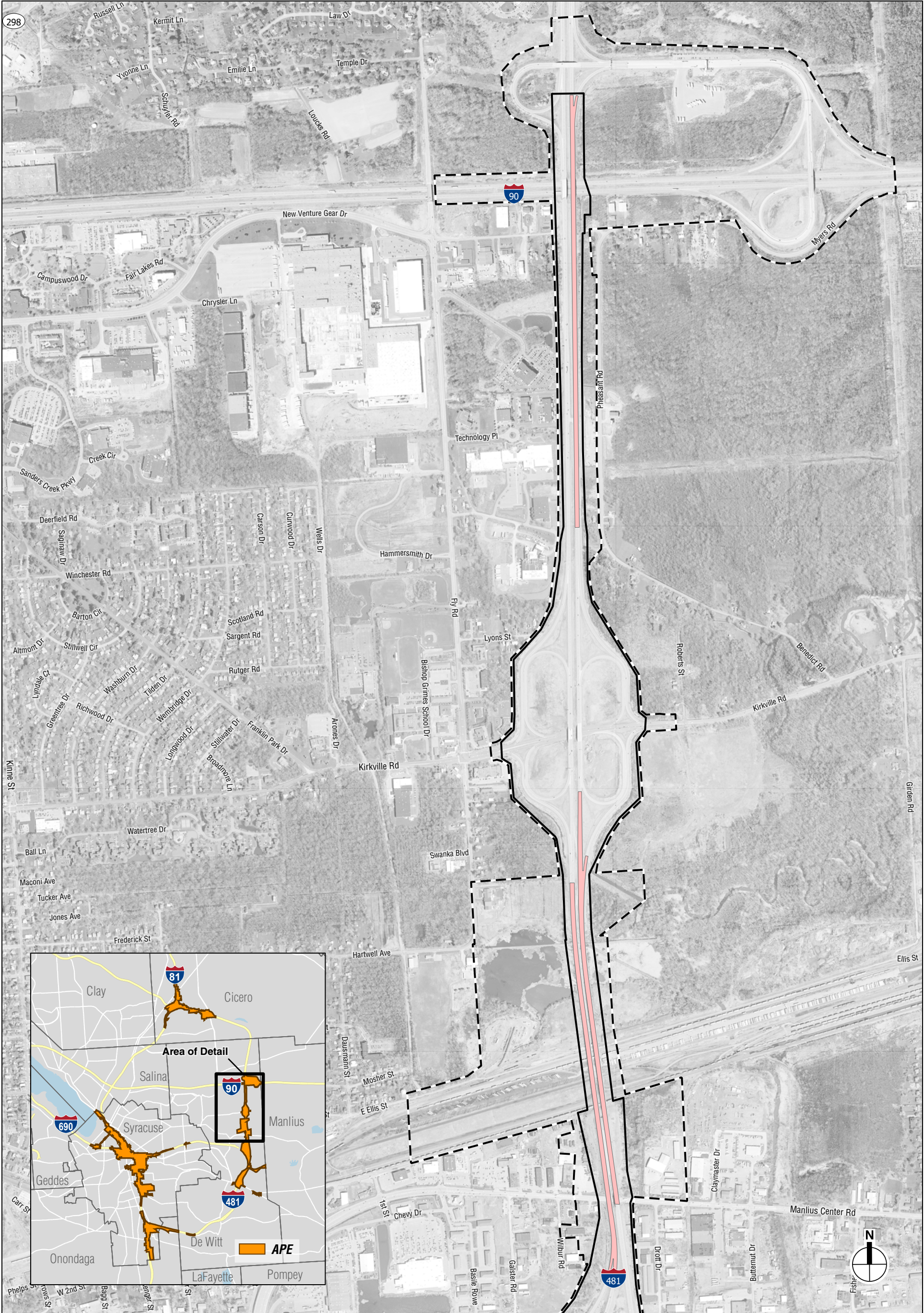


Historic Properties and Build Alternatives
Central Study Area
Figure 2c

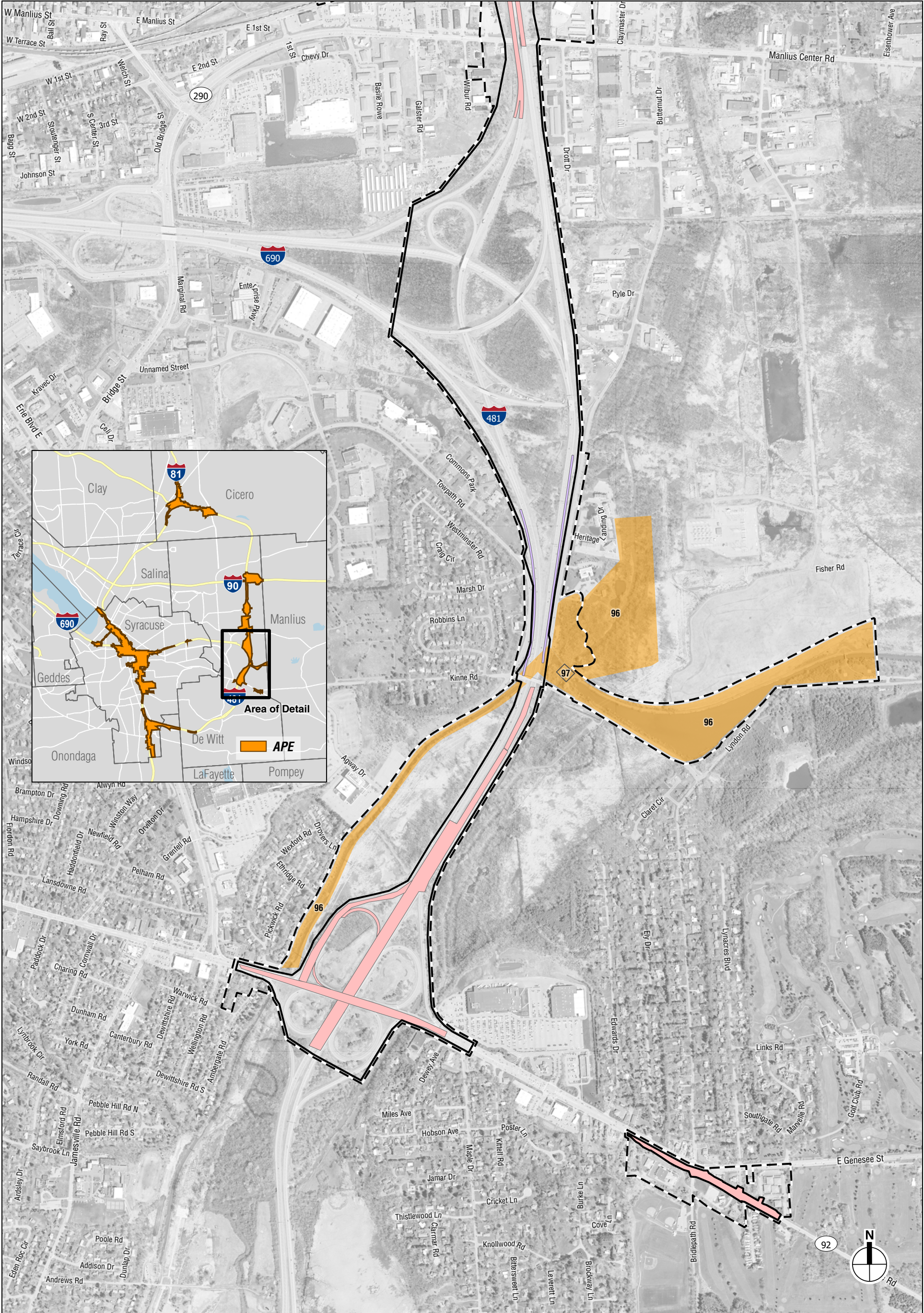


- Area of Potential Effects (APE)
- Limits of Disturbance (LOD), Combined Alternatives
- National Register Listed/Eligible
- Both (Viaduct and Community Grid) Alternatives
- Viaduct Alternative
- Community Grid Alternative

0 1,000 Feet



Historic Properties and Build Alternatives
East Study Area
Figure 2f



- Area of Potential Effects (APE)
- Limits of Disturbance (LOD), Combined Alternatives
- National Register Listed/Eligible

- Both (Viaduct and Community Grid) Alternatives
- Community Grid Alternative

0 1,000 Feet

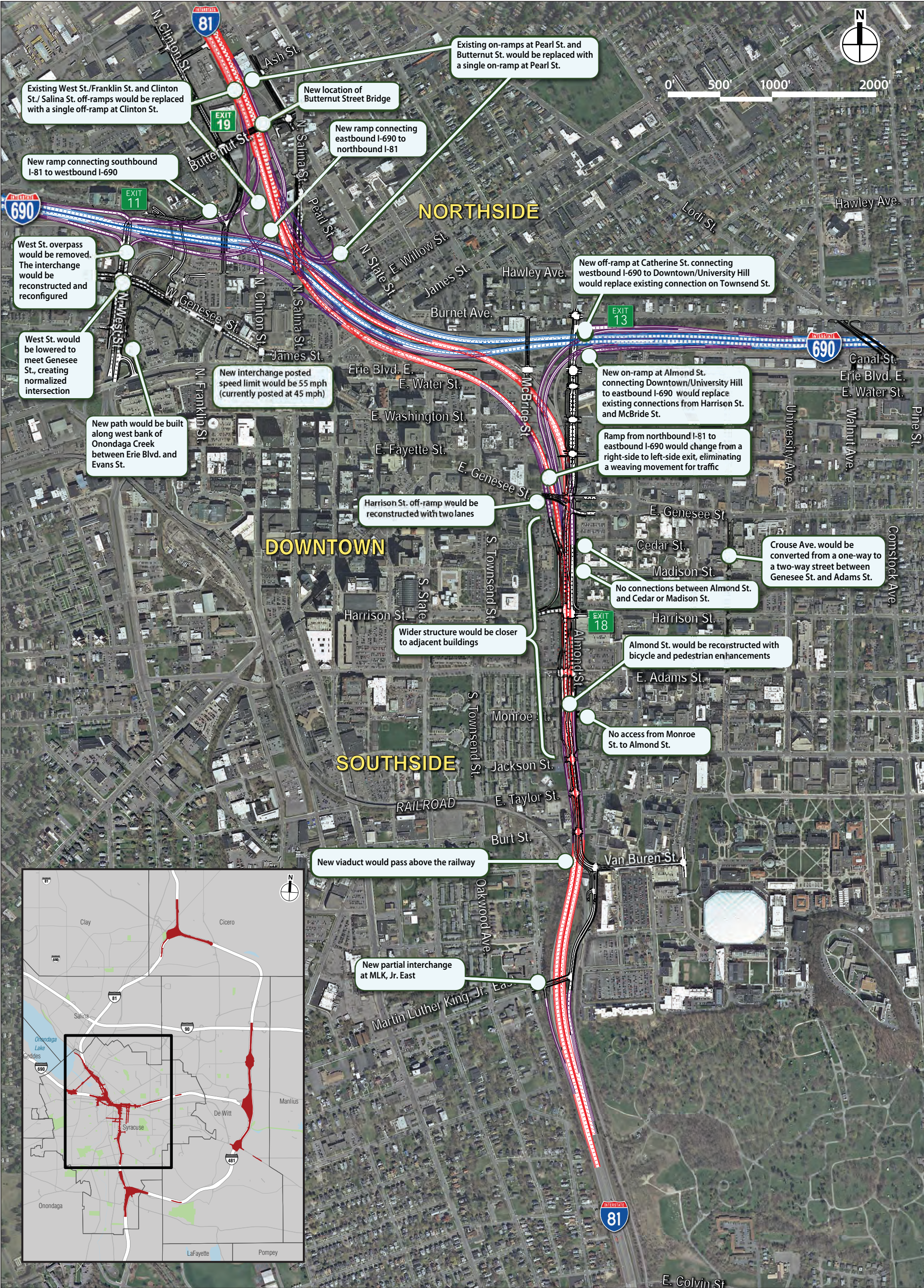
Historic Properties and Build Alternatives
South Study Area
Figure 2h

Property Key Historic Properties and Build Alternatives Figures

Building or Historic District ID #	Address/Location	
HD-1	Hanover Square Historic District	NR-listed
HD-2	North Salina Street Historic District	NR-listed
HD-3	South Salina Street Downtown Historic District	NR-listed
HD-4	Franklin Square Historic District	NR-eligible
1	145 ARSENAL DR REAR/ Onondaga Hollow Burial Ground, House Family Cemetery	NR-eligible
2	804 BELDEN AVE W	NR-eligible
3	111-15 BURNET AVE	NR-eligible
4	112-16 BURNET AVE/ Michael Dolphin Building/ Barboni Building	NR-eligible
5	204 BURNET AVE/ Corner Block Factory Shop/ Turack Motor Service	NR-eligible
6	210 BURNET AVE	NR-eligible
7	211 BURNET AVE/ Doll House	NR-eligible
8	212 BURNET AVE	NR-eligible
9	314 BURNET AVE	NR-eligible
10	316 BURNET AVE	NR-eligible
11	400 BURNET AVE & 815 ERIE BLVD E/ New York Central Railroad Passenger and Freight Station	NR-listed
12	122-24 BURNET AVE/ Brayton-Folker House/ Caldwell & Ward Brass Co. Office/ "Cab Fab"	NR-eligible
13	219 BURNET AVE & MC BRIDE ST Dollard House	NR-eligible
14	200 BURNET AVE & TOWNSEND ST/ Lammert Residence	NR-eligible
15	117 BUTTERNUT ST & SALT ST/ Veterans Fastener Supply Corp	NR-eligible
16	315 CLINTON ST N/ Residence (Paul Cowley & Associates)	NR-eligible
17	667 CLINTON ST N/ Amphion Piano Player Building	NR-eligible
18	717 CLINTON ST N & DIVISION S Simonds Building	NR-eligible
19	101 CLINTON ST N & GENESEE ST/ Syracuse Post Office and Courthouse	NR-listed
20	940 COMSTOCK AVE & COLVIN ST/ Oakwood Cemetery	NR-listed
21	410-18 CROUSE AVE S	NR-eligible
22	601-15 CROUSE AVE S & HARRISON S/ Temple Adath Yeshurun/ Hotel Skyler	NR-eligible
23	102 DIVISION ST W & CLINTON S/ Oak Knitting Co. Mill	NR-listed
24	500 ERIE BLVD E & TOWNSEND ST/ Smith Restaurant Supply	NR-eligible
25	740 ERIE BLVD E TO WATER ST E/ Terminal Building Warehouse (U Haul Warehouse)	NR-eligible
26	300-20 ERIE BLVD W/ The Niagara Hudson Building	NR-listed
27	711 FAYETTE ST E/ People's African Methodist Episcopal Zion Church	NR-listed
28	900 FAYETTE ST E & CROUSE AVE/ The Sylvester	NR-eligible
29	312 FILLMORE AVE/ The Heritage at Loretto	NR-eligible
30	610 FAYETTE ST E/ Reid Hall	NR-eligible
31	429 FRANKLIN ST N/ Remington Monarch Typewriter Company Building/ New Process Gear Plant #3	NR-eligible
32	455 FRANKLIN ST N & PLUM ST/ Regal Textile Plant	NR-eligible

Building or Historic District ID #	Address/Location	
33	432 FRANKLIN ST N TO CLINTON/ C.C. Bradley Plant	NR-eligible
34	311 GENANT DR TO CLINTON ST N/ Syracuse Lighting Co. Plant	NR-listed
35	237-43 GENESEE ST E/ Courier Building	NR-listed
36	309 MCBRIDE ST/ Peck Hall	NR-eligible
37	713-15 GENESEE ST E	NR-eligible
38	728 GENESEE ST E & FORMAN AVE	NR-eligible
39	719 GENESEE ST E TO ORANGE AL/ National Casket Co.	NR-eligible
40	400 GENESEE ST W & WALLACE ST/ Engine Company 12	NR-eligible
41	620 GENESEE ST W TO BELDEN AV/ First Presbyterian Church and Belden House	NR-eligible
42	226-30 GENESEE ST W TO CLINTON S/ FOE #53	NR-eligible
43	308 GENESEE ST W TO WILLOW ST	NR-eligible
44	725 HARRISON ST & MADISON ST/ Washington Irving School	NR-eligible
45	212 HERALD PL & FRANKLIN ST N/ Syracuse Herald Building	NR-eligible
46	429 JAMES ST/ Norton House	NR-eligible
47	437 JAMES ST/ Church of the Saviour	NR-eligible
48	457 JAMES ST	NR-eligible
49	408-22 JAMES ST & BURNET AVE/ The Snowden Hotel/ Apartments	NR-eligible
50	323-35 JAMES ST & STATE ST N	NR-eligible
51	452 LAFAYETTE RD	NR-eligible
52	471-81 OSWEGO BLVD/ 1 Webster's Landing/ VIP Structures	NR-eligible
53	200-232 PARK AVE & PLUM ST	NR-eligible
54	301 PROSPECT AVE TO LAUREL ST/ Saint Joseph's Hospital Nurse's Home	NR-eligible
55	114-18 SALINA ST N/ One Clinton Square Commercial Building	NR-eligible
56	120-22 SALINA ST N/ 100 Clinton Square Commercial Building	NR-eligible
57	126-28 SALINA ST N/ Commercial Building	NR-eligible
58	99 SALINA ST N/ Clinton Square	NR-eligible
59	108-12 SALINA ST N & JAMES ST/ Community Chest Building (Third National Bank)	NR-listed
60	100 SALINA ST N & JAMES ST/ Syracuse Savings Bank	NR-listed
61	382 SENECA TNPK E/ House	NR-eligible
62	485 SENECA TNPK E	NR-eligible
63	214 STATE ST N & WILLOW ST E/ Saint John the Evangelist Rectory	NR-eligible
64	215 STATE ST N & WILLOW ST E/ St John the Evangelist Church	NR-eligible
65	429 STATE ST N & BELDEN AVE E/ A. Angeloro Commercial Building	NR-eligible
66	509 STATE ST N	NR-eligible
67	511-513 STATE ST N	NR-eligible
68	521-23 STATE ST N	NR-eligible
69	525-27 STATE ST N	NR-eligible
70	707-09 STATE ST N TO SALT ST	NR-eligible
71	820-28 STATE ST N	NR-eligible

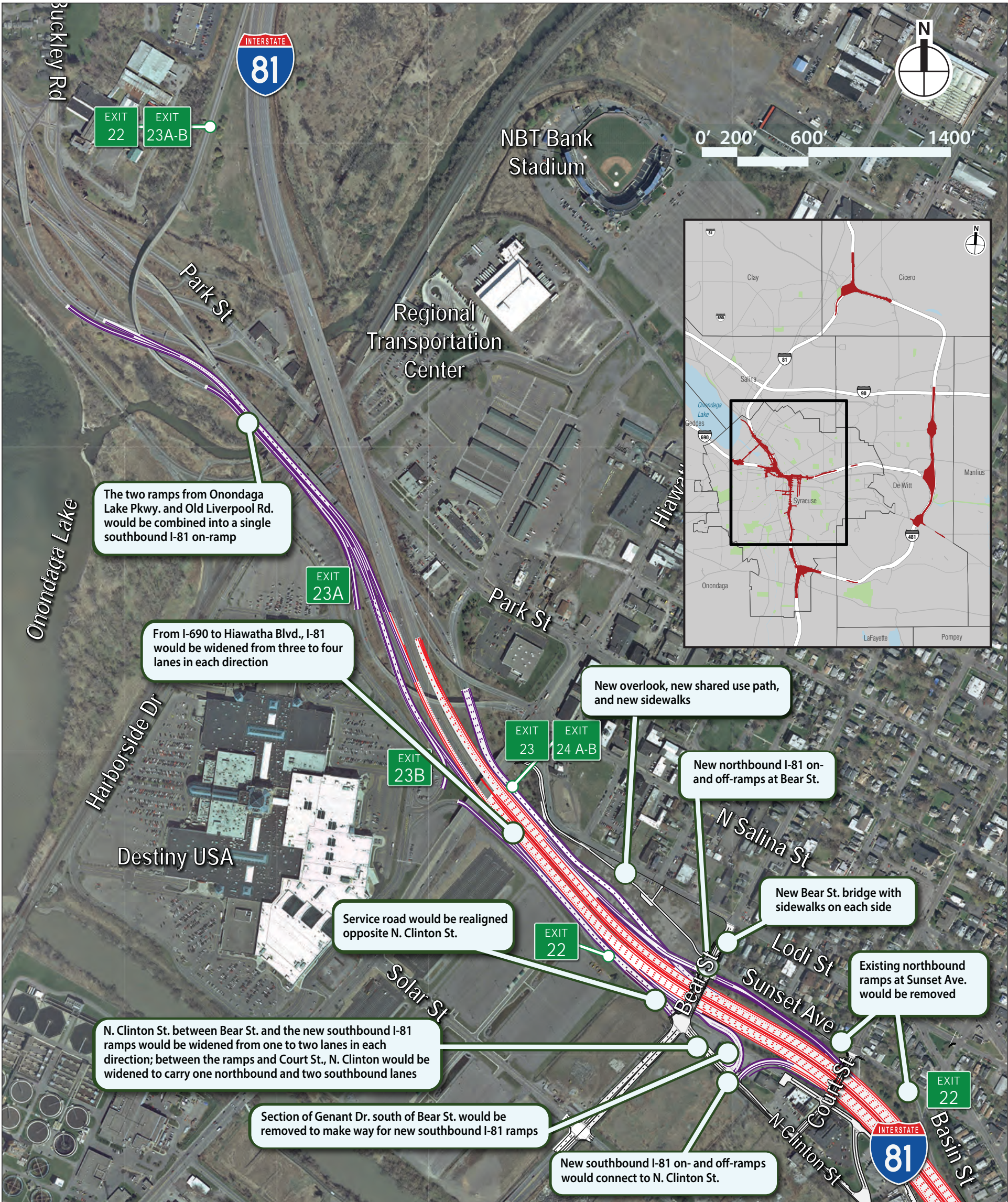
Building or Historic District ID #	Address/Location	
72	909 STATE ST N TO OSWEGO BLVD/ Wag Foods	NR-eligible
73	202 TOWNSEND ST N & BURNET AV/ Samuel Stapehy House	NR-eligible
74	205 TOWNSEND ST N/ Wolverine Apartments	NR-eligible
75	206 TOWNSEND ST N/ Frederick Featherly House	NR-eligible
76	West Genesee Street Bridge over Onondaga Creek	NR-eligible
77	Erie Boulevard West Bridge over Onondaga Creek	NR-eligible
78	205 TOWNSEND ST S/ 205 South Townsend Street	NR-eligible
79	301 TOWNSEND ST S & FAYETTE S/ Park Central Presbyterian Church	NR-eligible
80	307 TOWNSEND ST S & GENESEE S/ Hamilton White House	NR-listed
81	233 WASHINGTON ST E/ Syracuse City Hall	NR-listed
82	501 WASHINGTON ST E/ Brown Place	NR-eligible
83	101-13 WATER ST E/ Onondaga County Savings Bank Bldg	NR-listed
84	119-21 WATER ST E/ Gere (Robert) Bank Building	NR-listed
85	208 WATER ST W/ Amos Block	NR-listed
86	301 WATER ST E & ERIE BLVD E/ Weighlock Building	NR-listed
87	376 WATER ST W TO ERIE BLVD W/ Commercial	NR-eligible
88	123-29 WILLOW ST E/ Howard & Jennings Pump Factory/ Colella Galleries Building	NR-eligible
89	230 WILLOW ST W/ C.W. Snow & Company Warehouse	NR-listed
90	317-327 SALINA ST N/ Britton Block (Contributing to the North Salina Street Historic District 2019 Expansion)	NR-listed
91	329 SALINA ST N/ Learbury Centre (Contributing to the North Salina Street Historic District 2019 Expansion)	NR-listed
92	200 MADISON ST (515 Montgomery St) Onondaga County War Memorial	NR-listed
93	727 STATE ST S/ Everson Museum of Art	NR-eligible
94	800 CLINTON ST N/ Destiny Arms	NR-eligible
95	215 Burnet Avenue	NR-eligible
96	Old Erie Canal State Historic Park	NR-eligible
97	Butternut Creek Aqueduct	NR-eligible
98	600 North Franklin Street/ Merrell-Soule None Such Mince Meat Factory	NR-listed





See Figure 3a for Colvin Street to Butternut Street

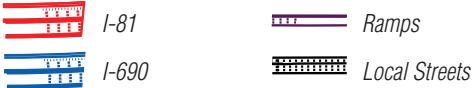
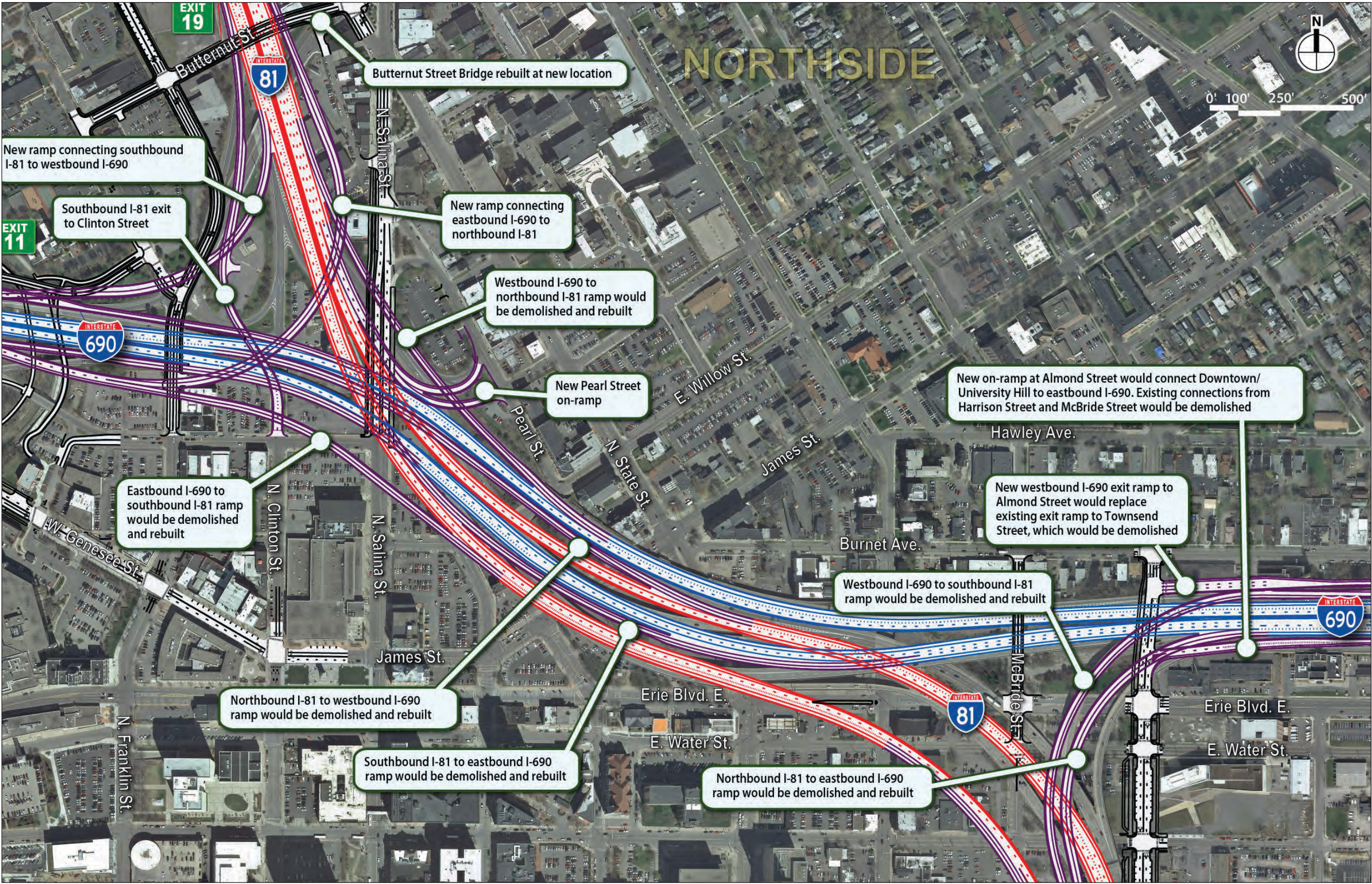
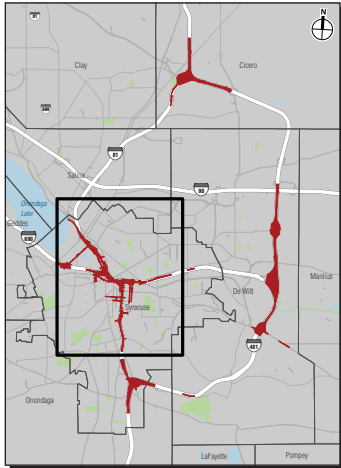
Viaduct Alternative Overview:
Butternut Street to Bear Street
Figure 3b



See Figure 3b for Butternut to Bear Streets

- I-81
- I-690
- Ramps
- Local Streets

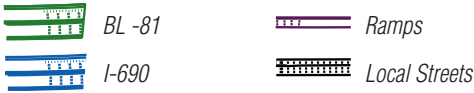
Viaduct Alternative Overview:
Bear Street to Hiawatha Boulevard
Figure 3c



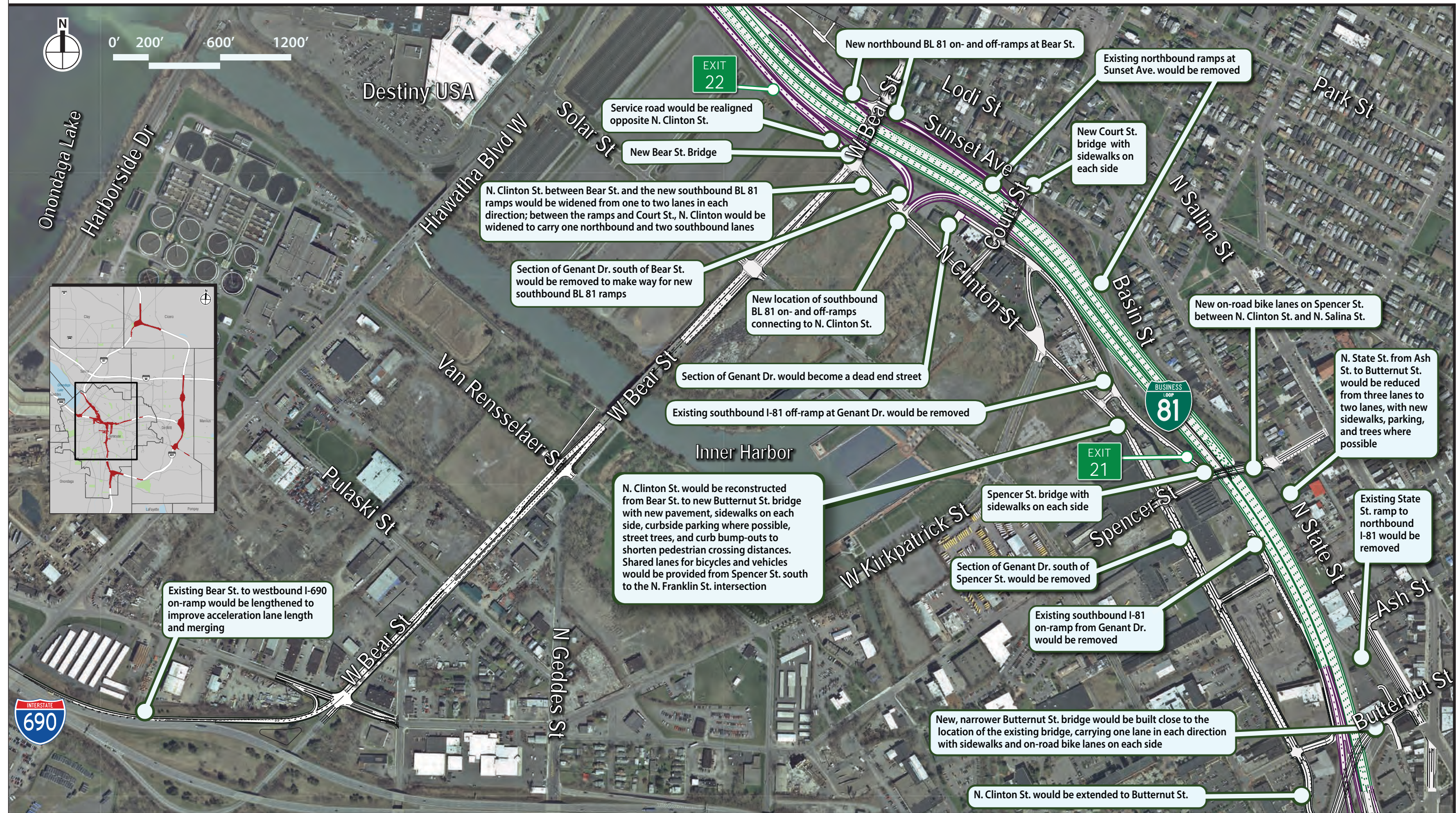
I-81 Viaduct Project

Viaduct Alternative Overview:
I-81 / I-690 Interchange Improvements
Figure 3d

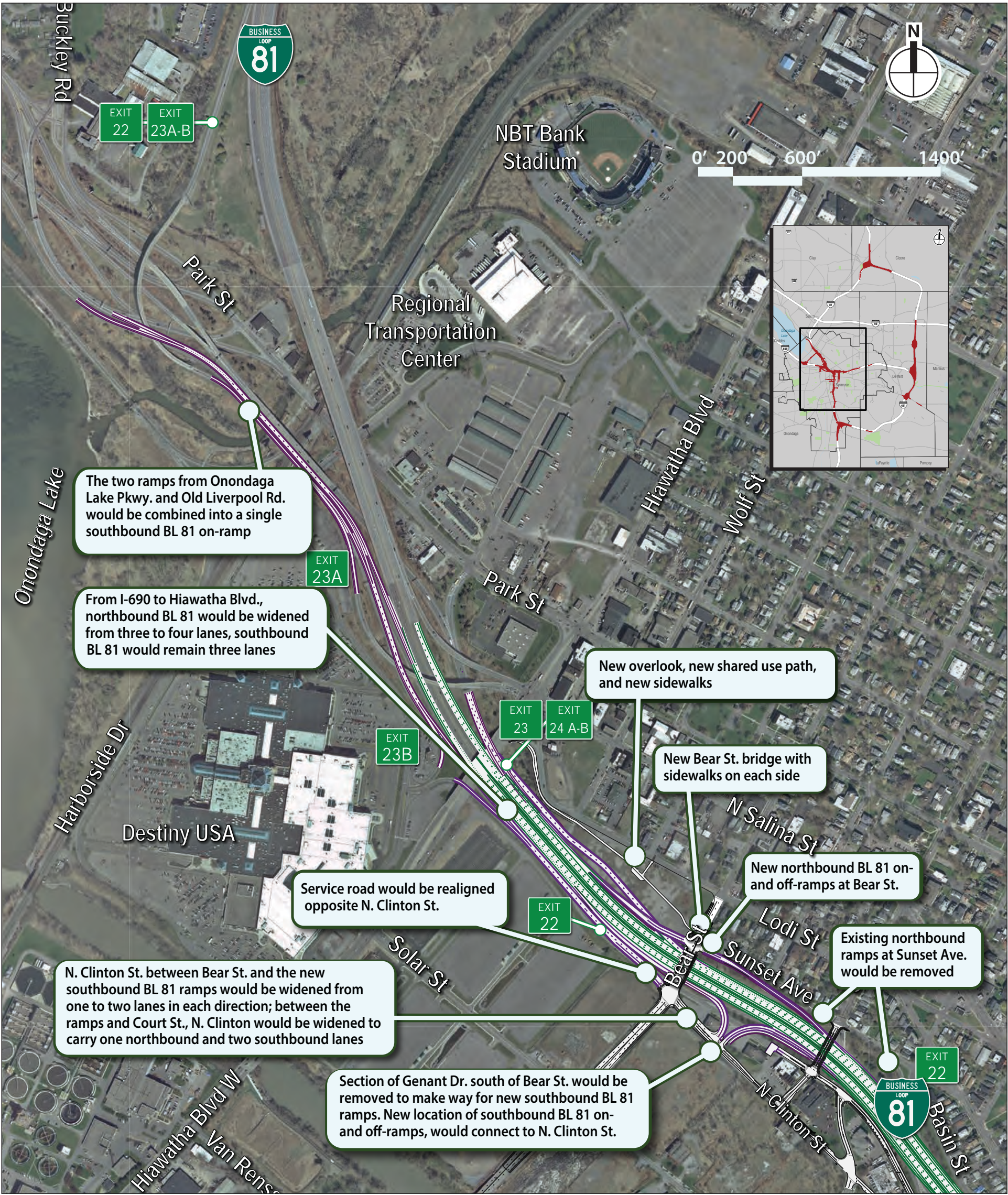
See Figure 4b for Butternut to Bear Streets



Community Grid Alternative Overview:
Colvin Street to Butternut Street
Figure 4a



- Business Loop 81
- New Ramps
- Local Road

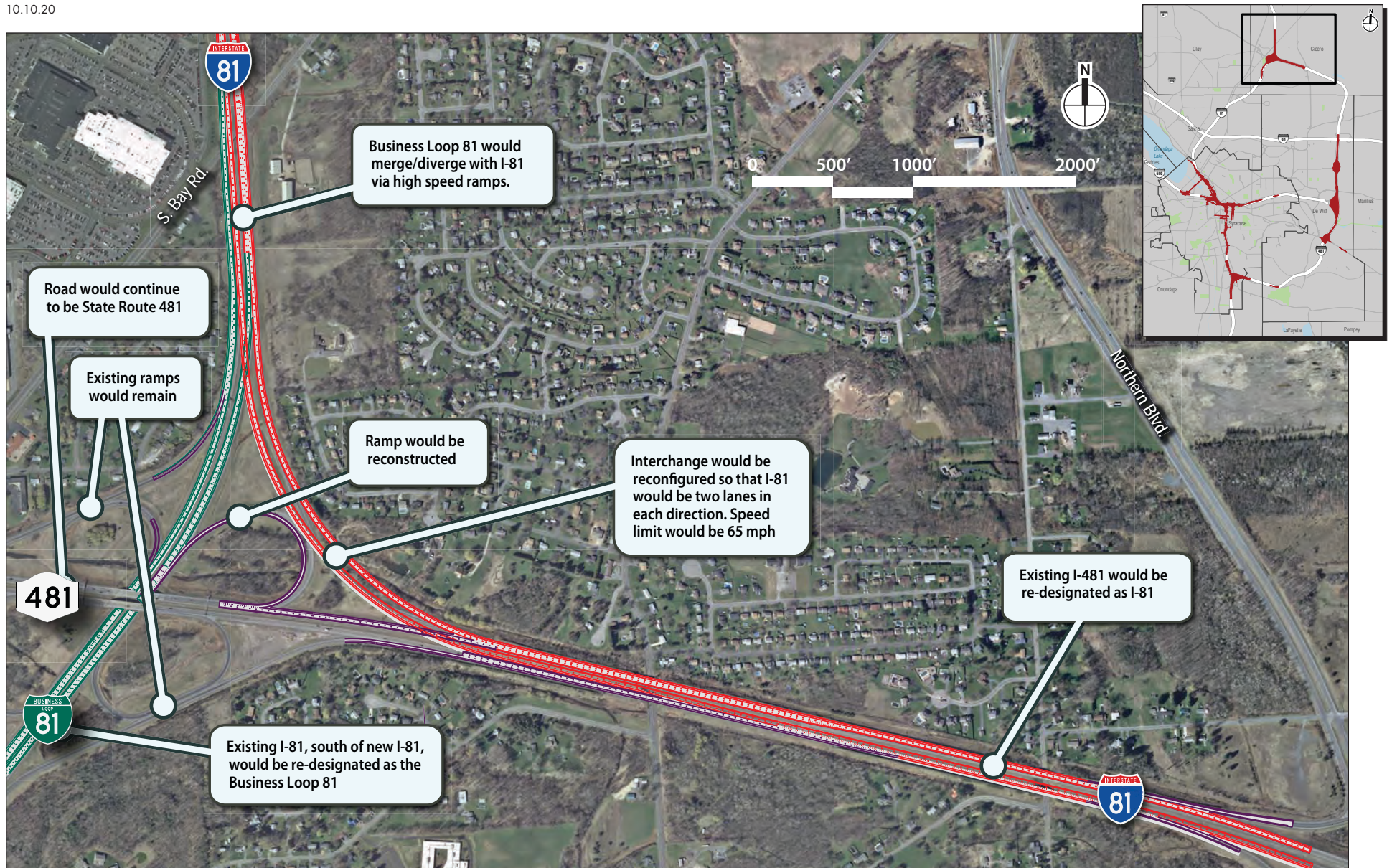


Community Grid Alternative Overview:
Bear Street to Hiawatha Boulevard
Figure 4c



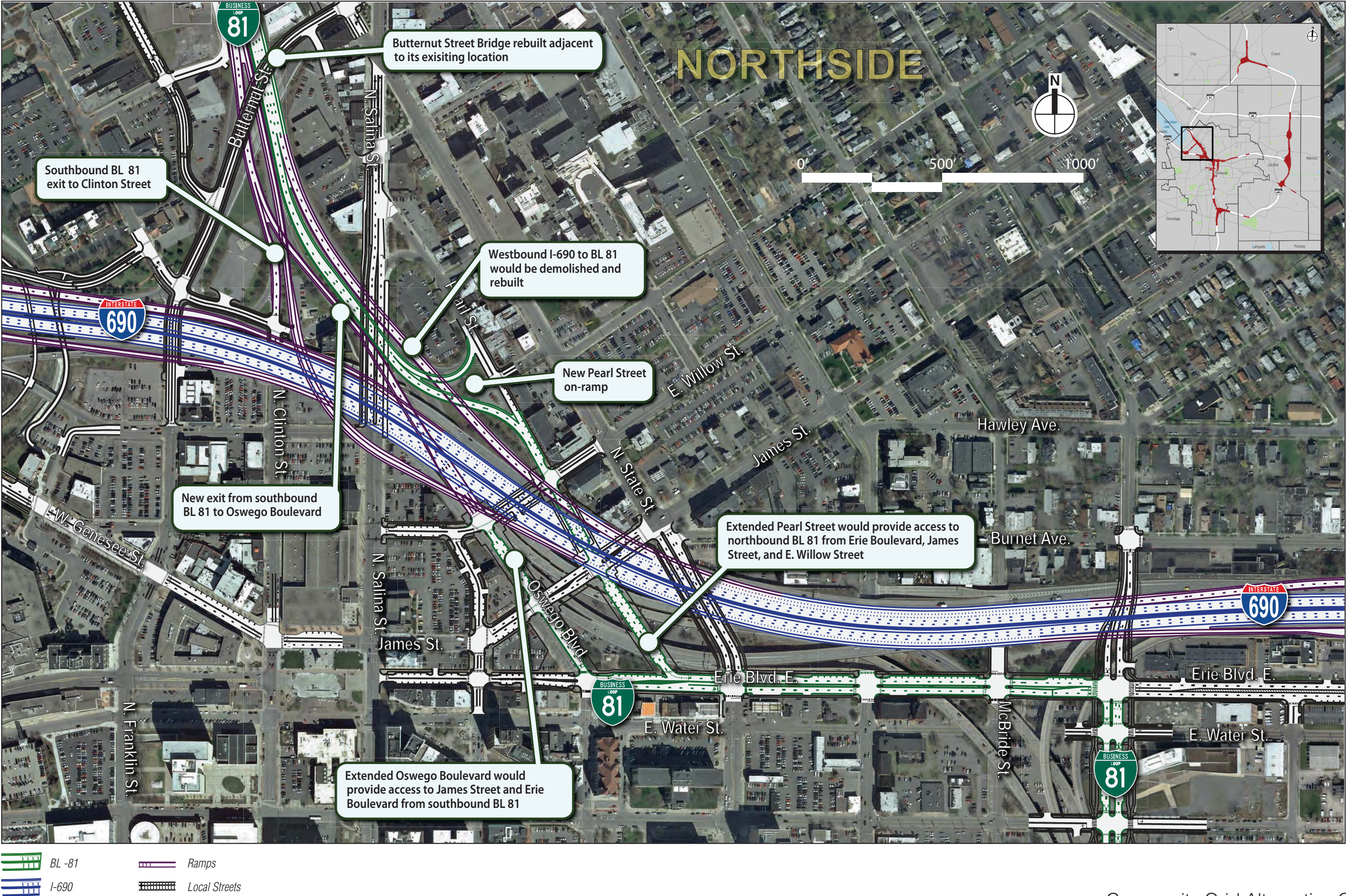
Community Grid Alternative Overview:
South Interchange of the New I-81 (formerly I-481)

Figure 4d



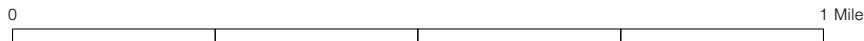
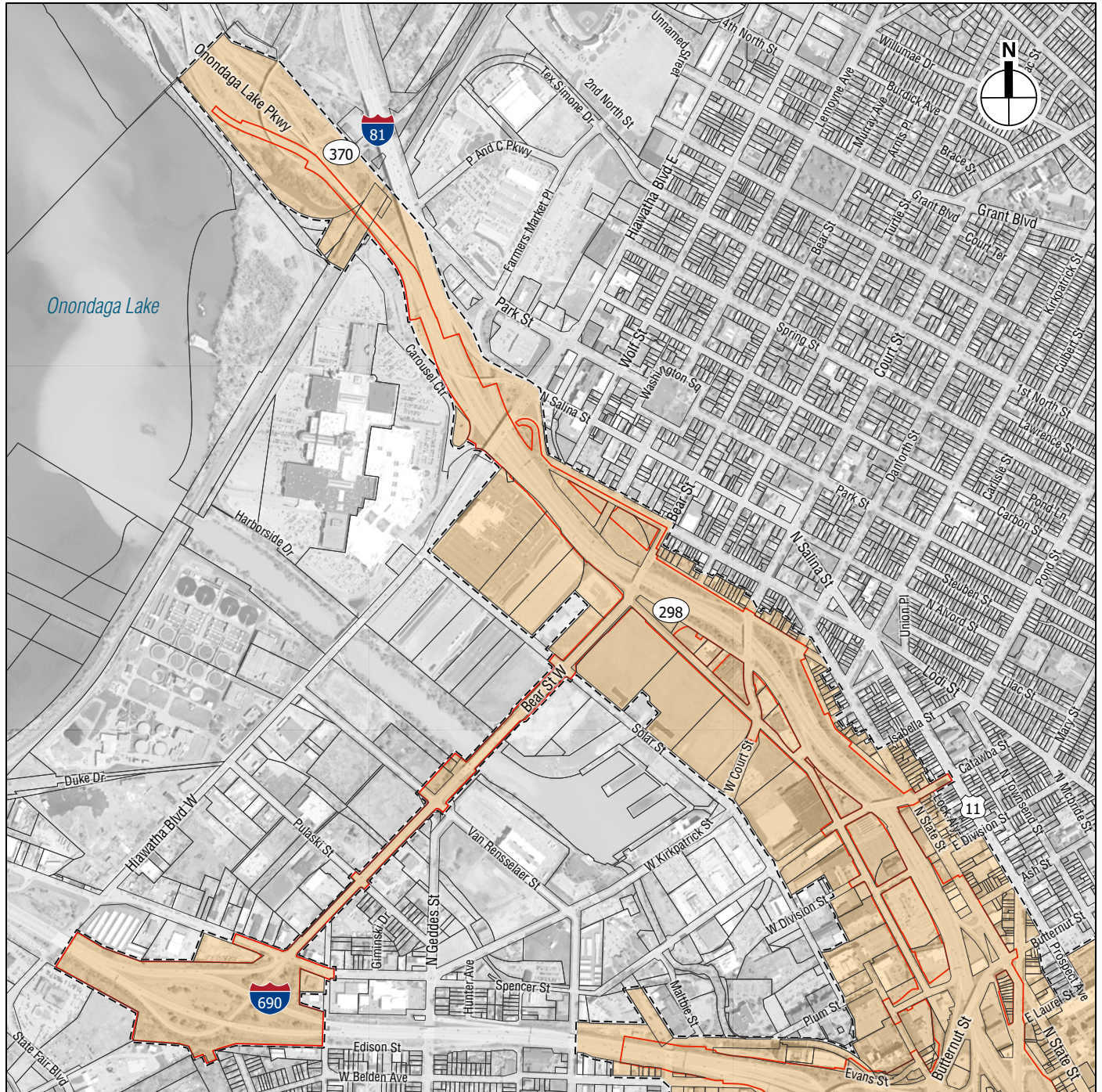
I-81 Viaduct Project

Community Grid Alternative Overview:
North Interchange of the New I-81 (formerly I-481)
Figure 4e

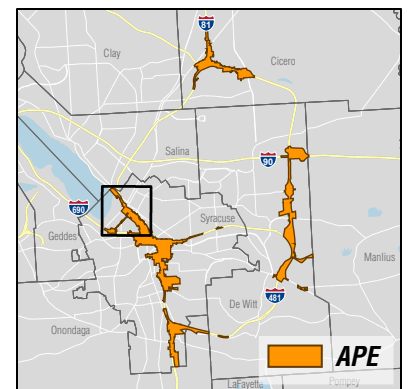


I-81 Viaduct Project

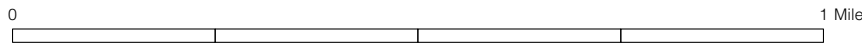
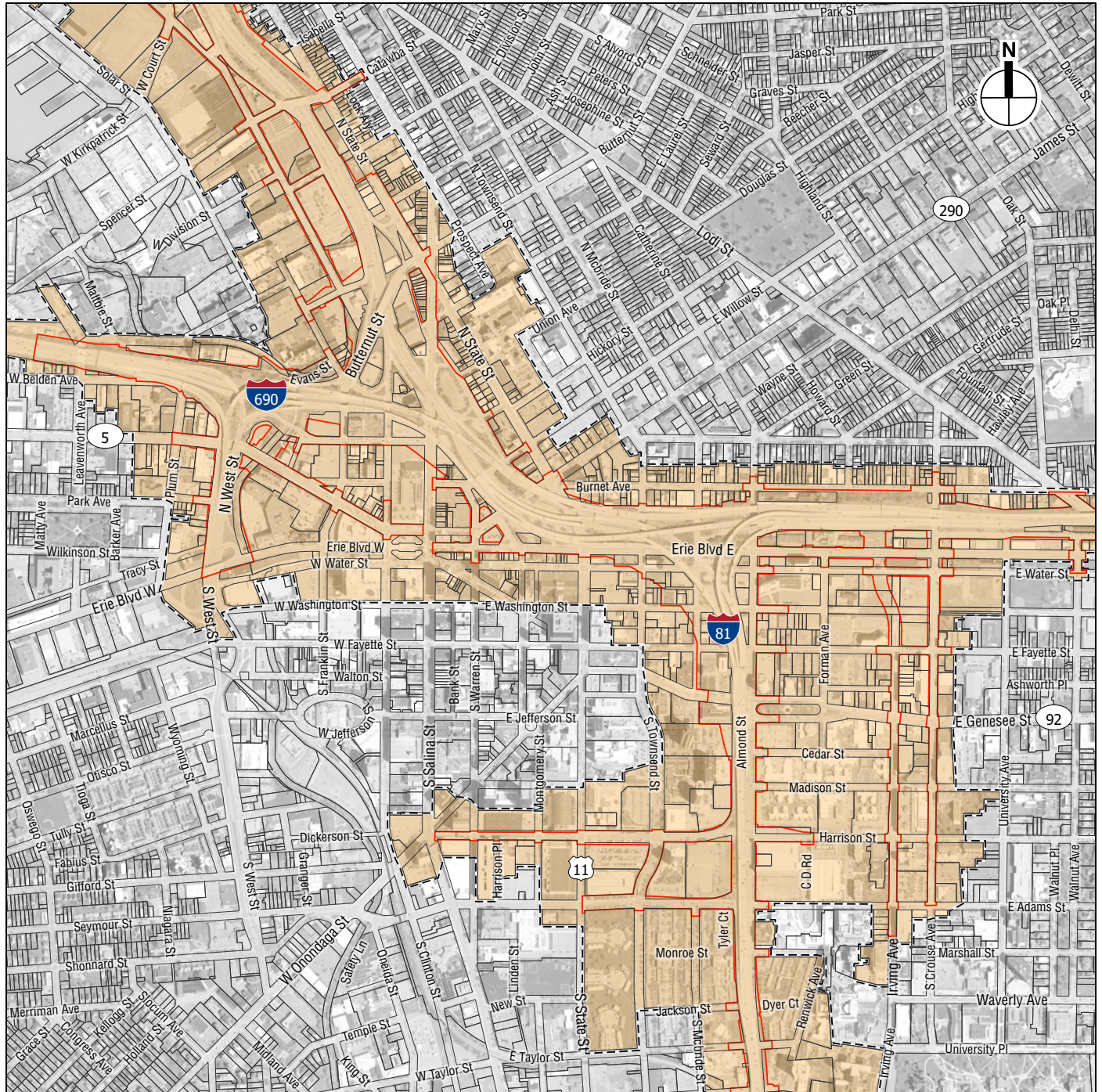
Community Grid Alternative Overview:
BL 81/I-690 Interchange Improvements
Figure 4f



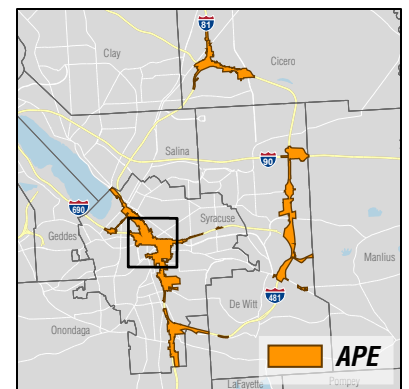
- Area of Potential Effects (APE)
- Limits of Disturbance (LOD), Combined Alternatives
- Tax Parcels



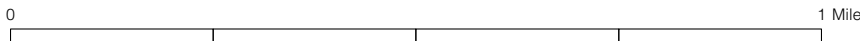
Area of Potential Effects (APE) - Central Study Area






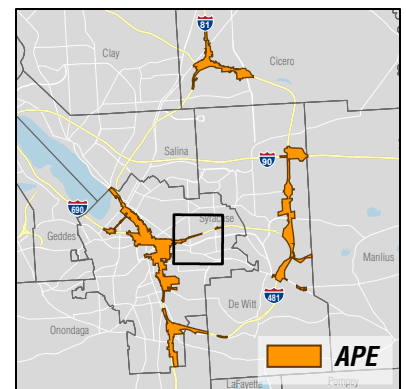
- Area of Potential Effects (APE)
- Limits of Disturbance (LOD), Combined Alternatives
- Tax Parcels



Area of Potential Effects (APE) - Central Study Area

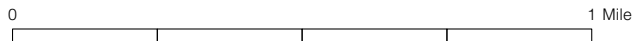
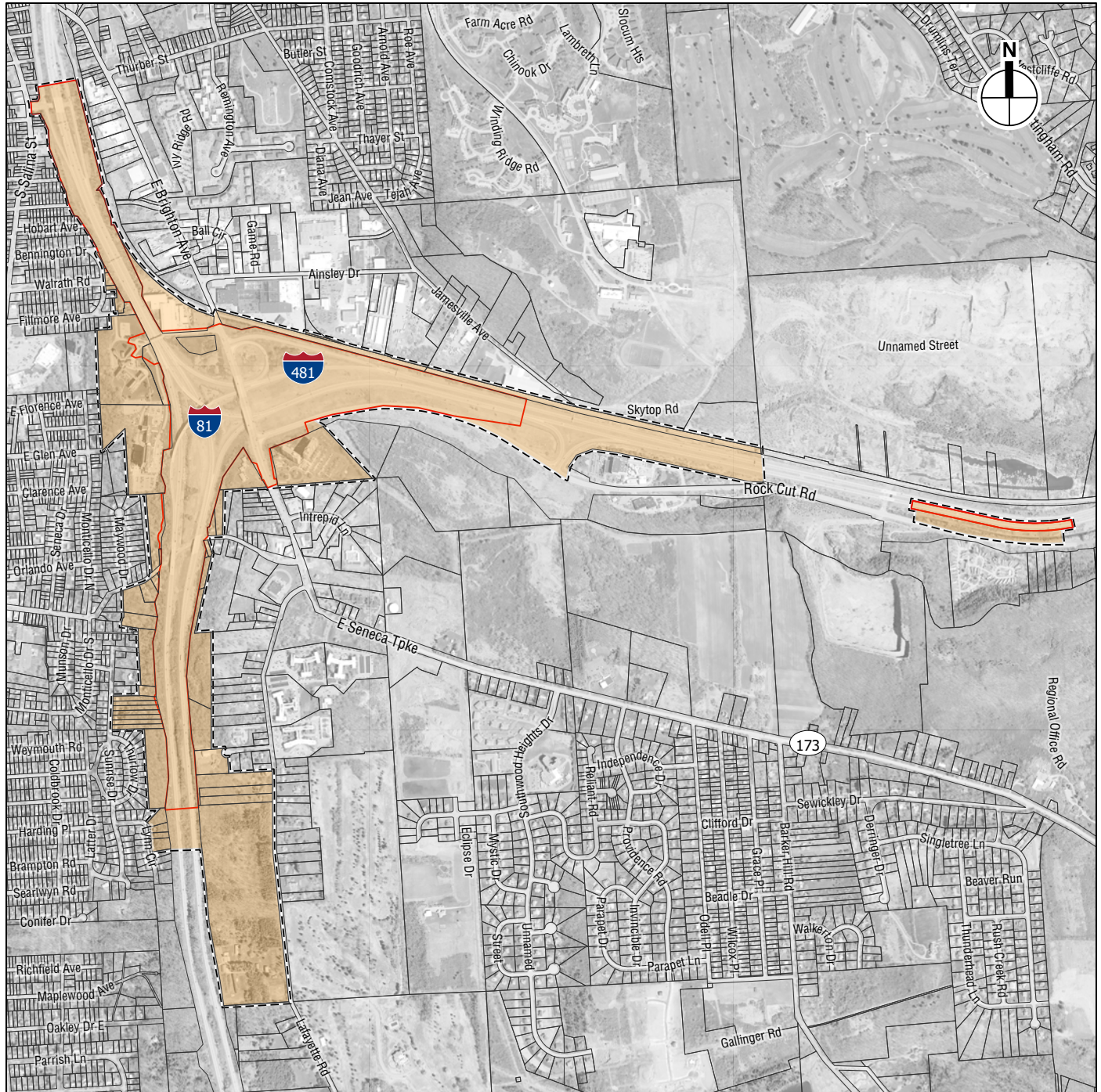


-  Area of Potential Effects (APE)
-  Limits of Disturbance (LOD), Combined Alternatives
-  Tax Parcels

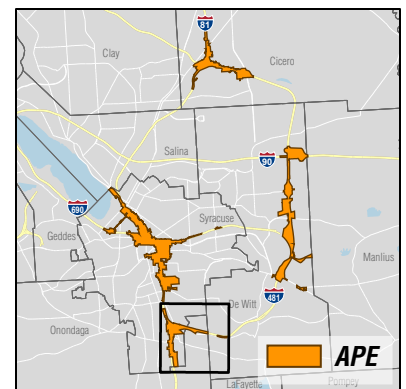


Area of Potential Effects (APE) - Central Study Area
Figure 5c

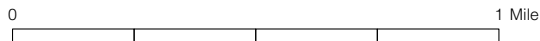
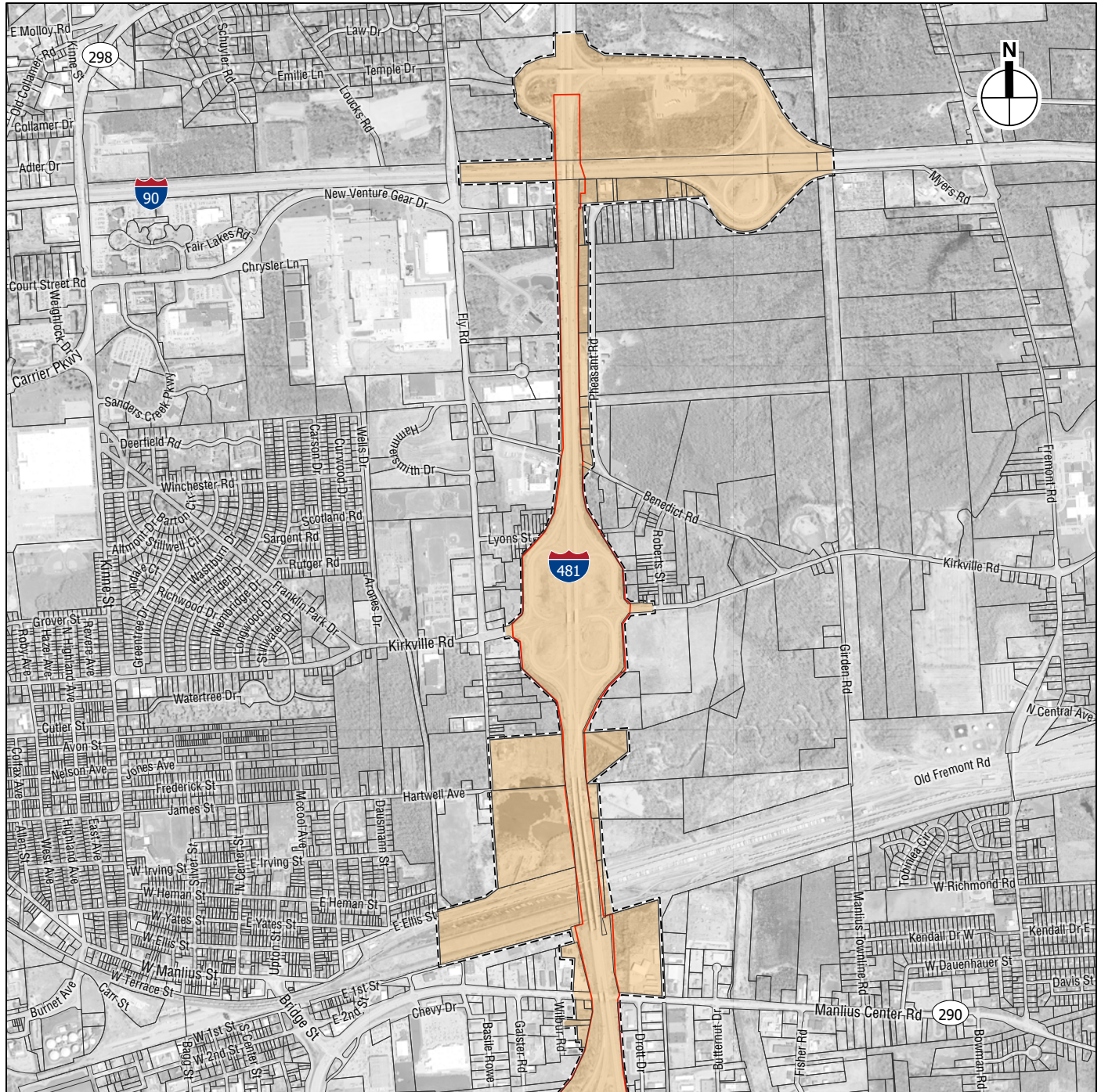
09.10.2020






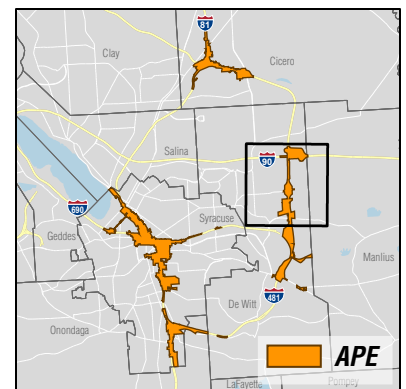
- Area of Potential Effects (APE)
- Limits of Disturbance (LOD), Combined Alternatives
- Tax Parcels



Area of Potential Effects (APE) - South Study Area
Figure 5e

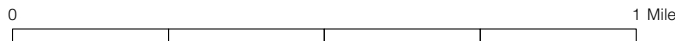
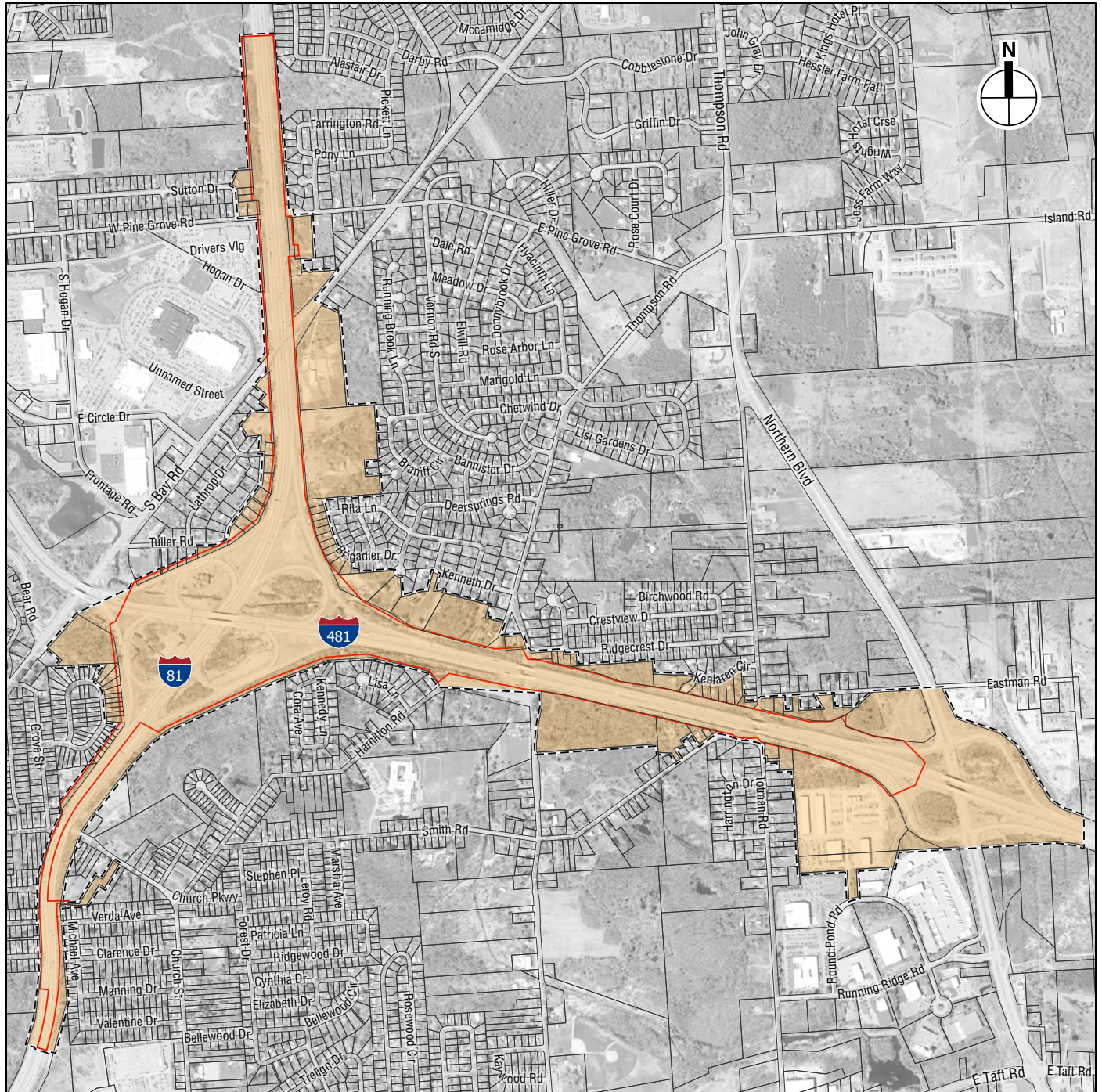


-  Area of Potential Effects (APE)
-  Limits of Disturbance (LOD), Combined Alternatives
-  Tax Parcels

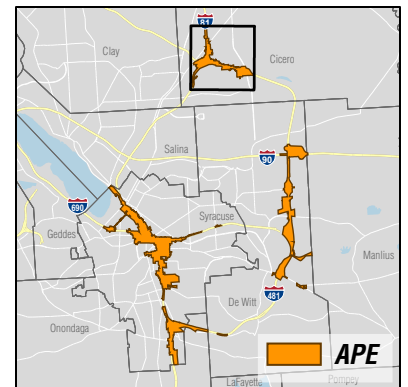


Area of Potential Effects (APE) - East Study Area

Figure 5g



- Area of Potential Effects (APE)
- Limits of Disturbance (LOD), Combined Alternatives
- Tax Parcels



Area of Potential Effects (APE) - North Study Area
Figure 5h